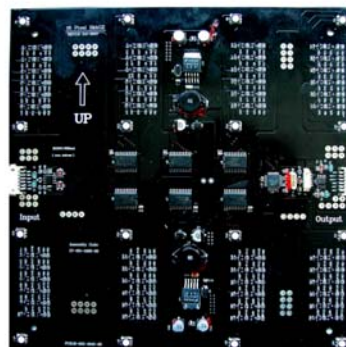




LED Lighting



X-Puzzle-Image

16 high intensity SMD LEDs

► FEATURES

- Controllable color mixing
- Average 50,000 hours life time
- Auto DMX Addressing
- Standard DMX-512A or DMX-1000K(1M) control compatible
- Ability of up to 40pcs(640pixels) X-Puzzles can be connected per DMX-1000K
Ability of up to 10pcs(160pixels) X-Puzzles can be connected per DMX-512A

► SPECIFICATION

COLOR RANGE	16.7 million (24bit)						
PIXEL DISTANCE	2.5" / 63.5mm						
LIGHT SOURCE	16 high intensity SMD LEDs						
SOURCE LIFE	50,000 hours under normal operating conditions						
OPERATING VOLTAGE	24VDC						
LED TYPE	Full color 5050 SMD						
POWER CONSUMPTION	6W						
CURRENT CONSUMPTION	250mA						
EMISSION WAVE LENGTH	Red		Green		Blue		I _F =20mA
	Min.	Typ.	Min.	Typ.	Min.	Typ.	Unit
	626	629	518	522	469	472	nm
LUMINOUS INTENSITY (6.87M)	62.39 (lm)						
VIEWING ANGLE	113°						
FORWARD VOLTAGE	Red		Green		Blue		I _F =20mA
	Min.	Typ.	Min.	Typ.	Min.	Typ.	Unit
	1.6	1.9	3.0	3.2	3.0	3.2	V
POWER DISSIPATION	Red: 70mW Green: 90mW Blue: 110mW						
CONNECTION PROTOCOL	DMX-512A or DMX-1000K(1M) compatible						
CONNECTION	6-pin terminal						
HOUSING	PCB type						
OPERATING TEMPERATURE	-10° C ~ +50° C						
STORAGE TEMPERATURE	-20° C ~ +70° C						
DIMENSION	203(L) x 203(W) x 15(H)mm / 8"(L) x 8"(W) x 0.59"(H)mm						
WEIGHT	120g						

X-Puzzle-Image

PHOTOMETRIC DATA

Light source specifications

Optics: /
 Light source: 16 high intensity LEDs
 Beam angle: 113 deg
 Light distribution: symmetric direct illumination

Illuminance

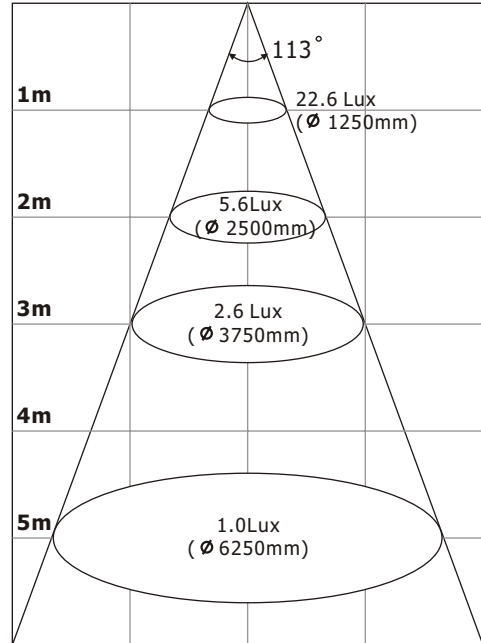
COLOR	1m		2m		3m		5m	
	Lux	Size (mm)	Lux	Size (mm)	Lux	Size (mm)	Lux	Size (mm)
RED	7	1264	1.8	2528	0.8	3792	0.2	6320
GREEN	14.8	1268	3.6	2536	1.6	3804	0.6	6340
BLUE	1.8	1260	0.4	2520				
WHITE	22.6	1250	5.6	2500	2.6	3750	1.0	6250

* light pattern indicates the size at 50% of peak intensity

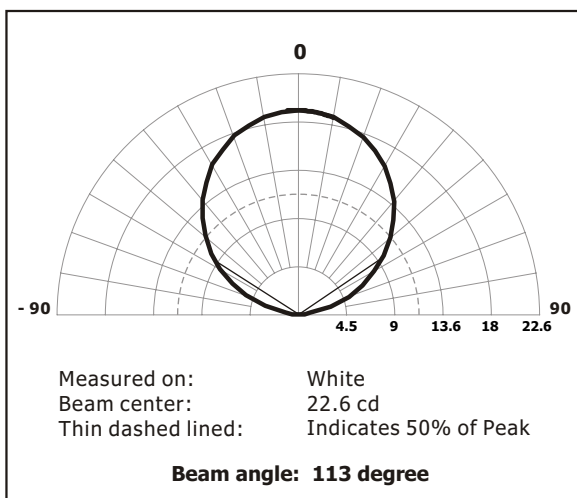
Light output

COLOR	Total (lumens)	Power(watts)	Efficacy(lm/W)
RED	19.17	2.5	7.668
GREEN	40.1	2.5	16.04
BLUE	5.08	2.5	2.03
WHITE	62.39	6.1	10.2

Full intensity in white color

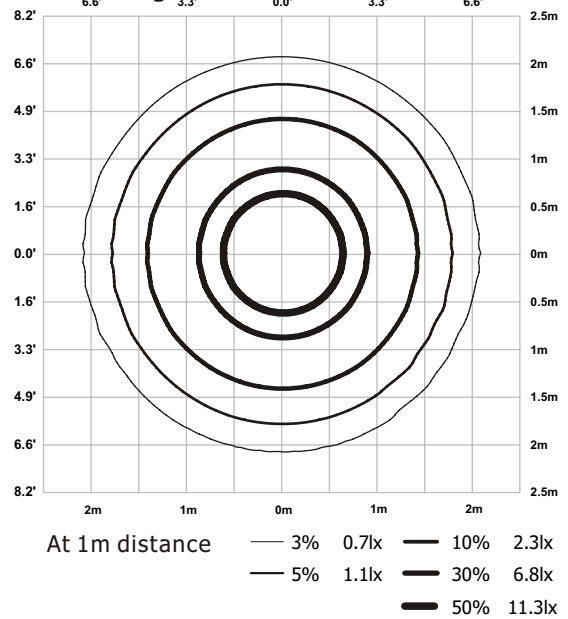


Light distribution



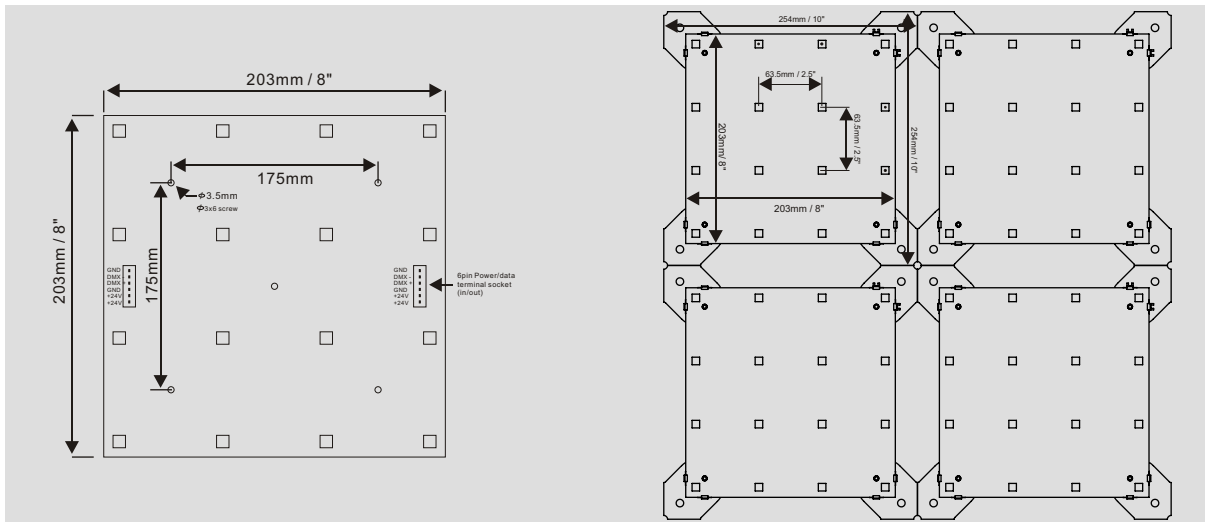
IES file is also available

Isolux diagram

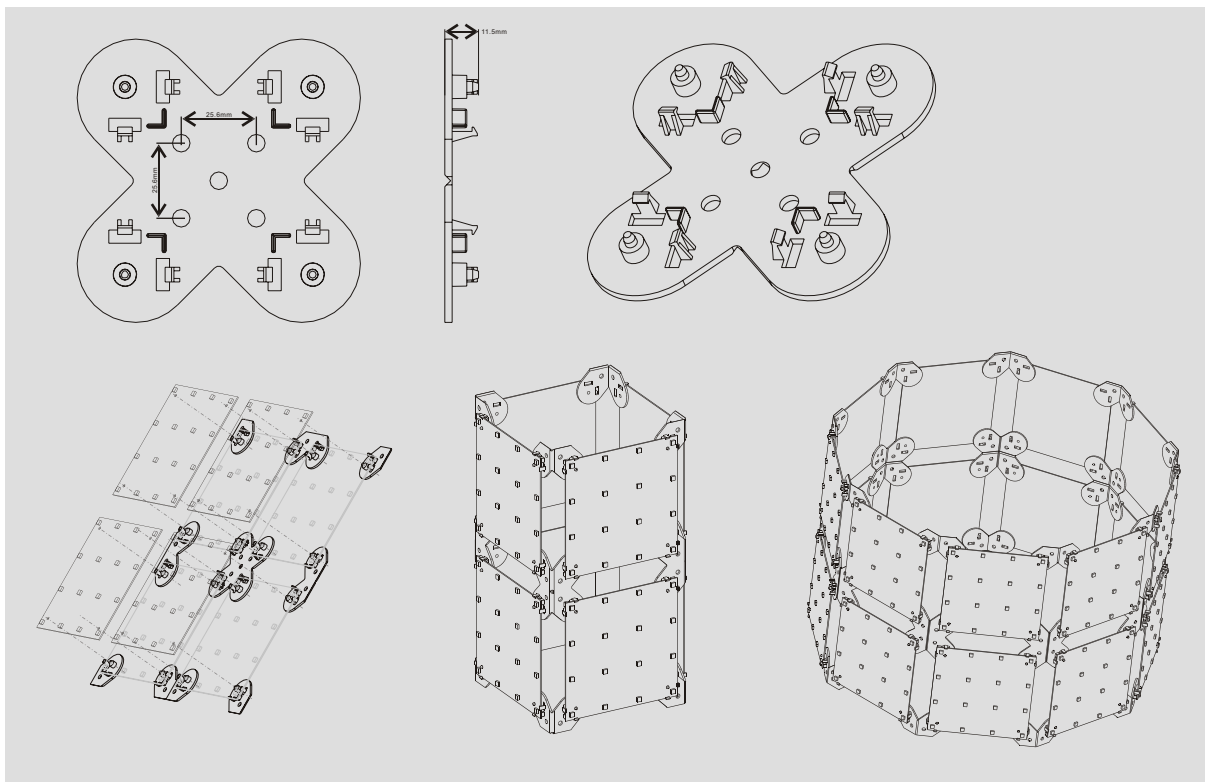


X-Puzzle-Image

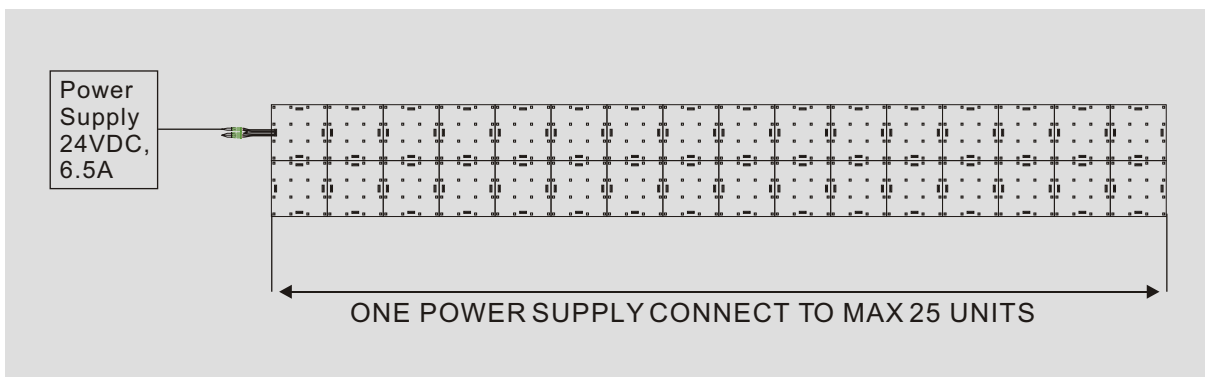
► TECHNICAL DRAWING



► MOUNTING KIT



► TECHNICAL DRAWING - CONNECTION

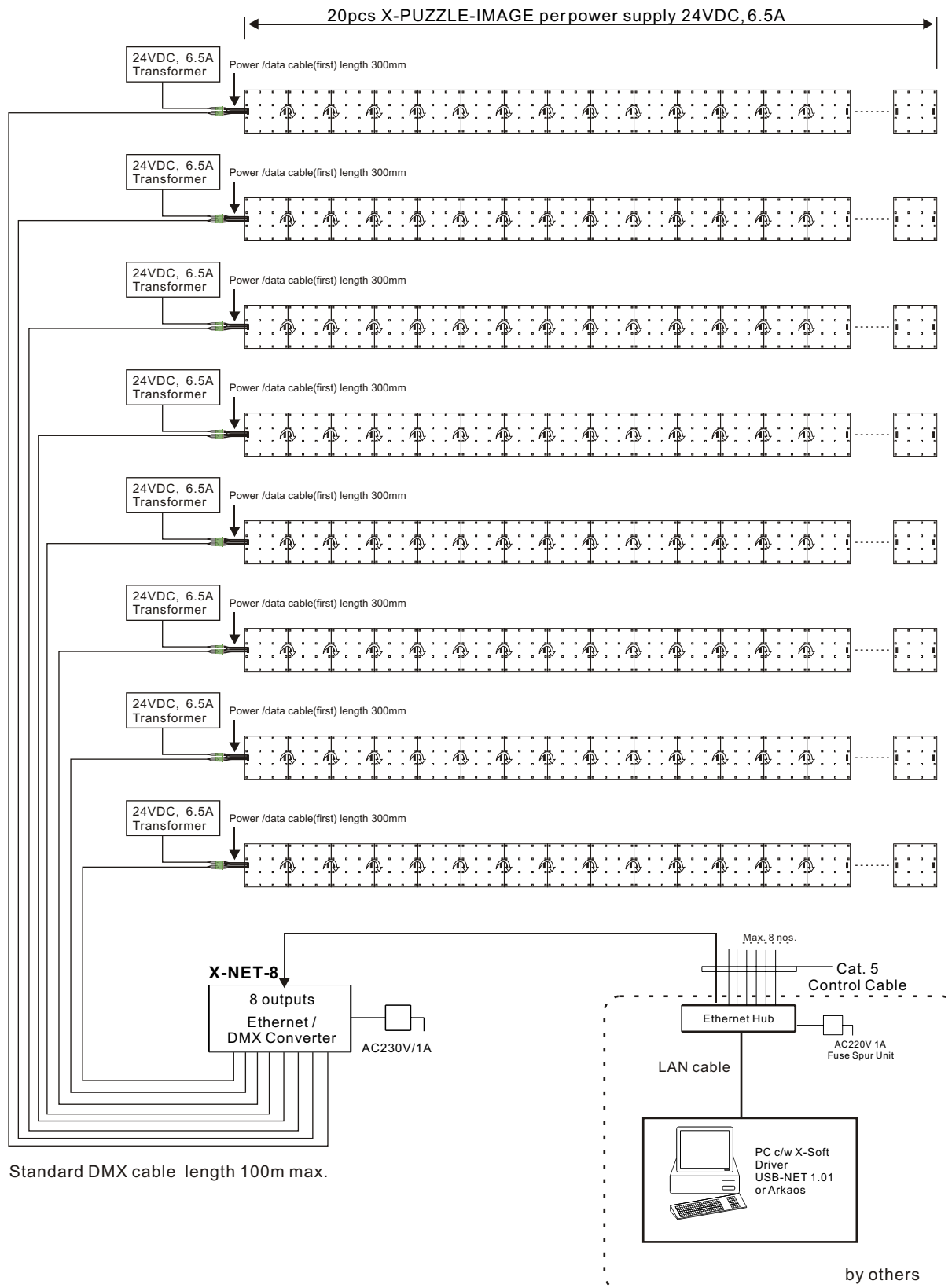


** All rights reserved. Improvement and changes to specifications, design and all contents in this catalog, may be made at any time without prior notice.

X-Puzzle-Image (DMX-1000K Control)

► 80x32pixels (160pcs) X-Puzzle-Image System configuration

EQUIPMENT LIST: 160pcs X-Puzzle-Image; 1 set X-NET-8 ; 8pcs PSU: 24VDC, 6.5A; 8pcs Standard DMX cable



** All rights reserved. Improvement and changes to specifications, design and all contents in this catalog, may be made at any time without prior notice.